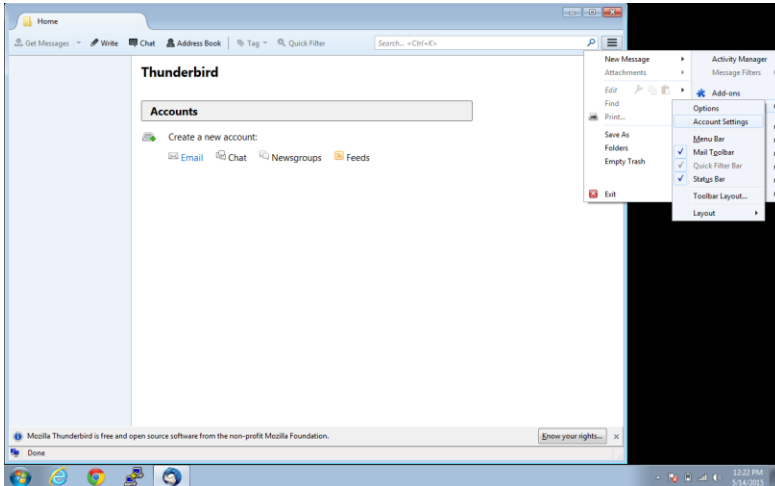
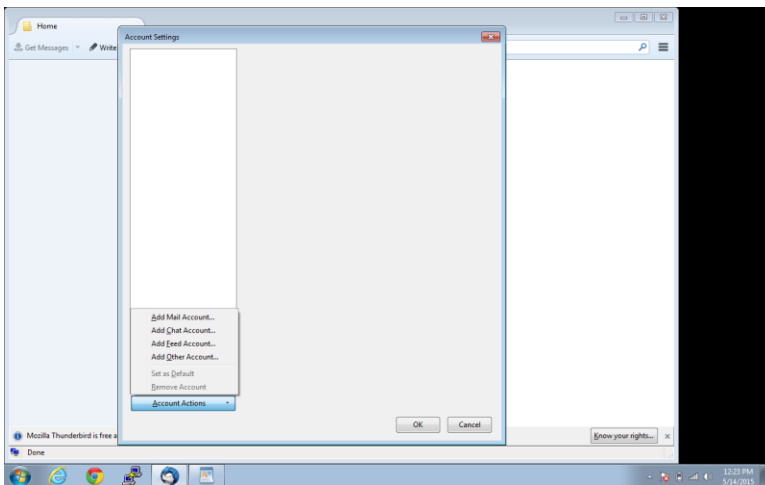


Setting Up Smartermail to Work With Thunderbird

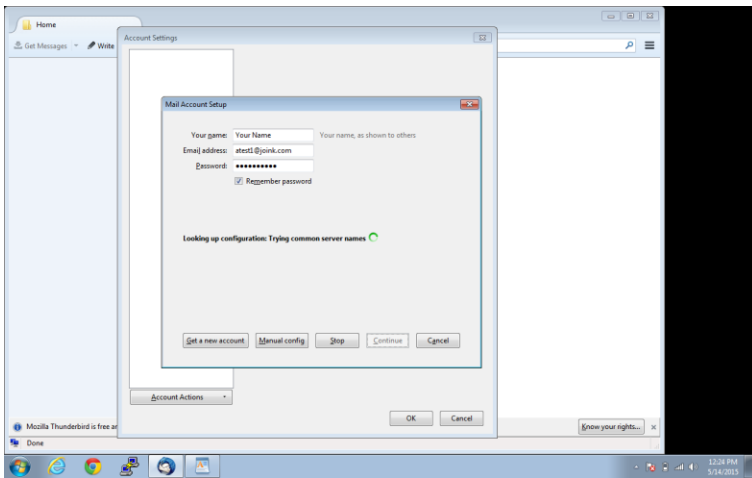
1. First, open **Tools | Account Settings**. Each email or newsgroup account that has already been configured is listed on the left side of the Account Settings dialog. These accounts correspond to the top-level folders displayed in the "All Folders" list.



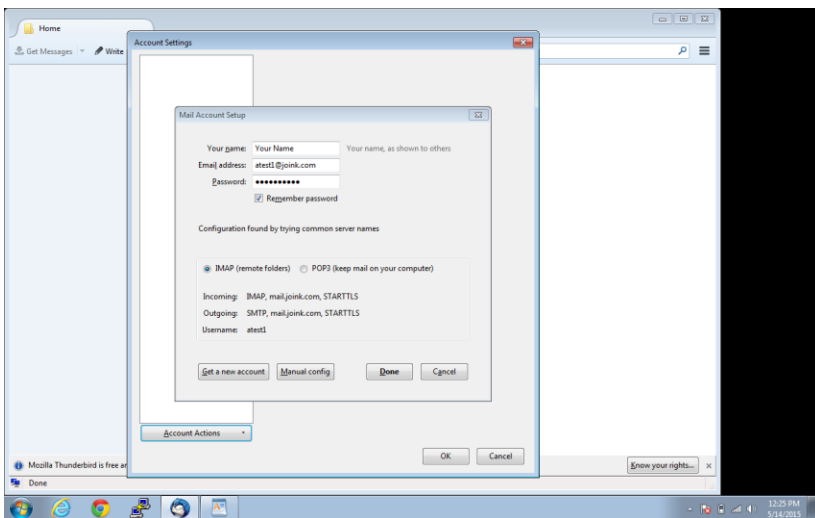
2. Select **Add Mail Account**.



3. Enter your email account details and press **Continue**.



4. The next screen make sure the bullet is next to IMAP and then click Done



5. Thunderbird then verifies the password and your email account will open.

